

CATANACERBA installation guide

DOWNLOADABLE CATALOG

The local CERBA CATALOG is installed in a WINDOWS 95/98/2000/XP/NT operating environment

► You are connected to the result server



Enter the URL address: <http://www.lab-cerba.com>

Section: **Server** then click on: **Download CATANACERBA**

Login and password: use those that you were given for the result server

► You are not connected to the result server



Enter the URL address: <http://www.lab-cerba.com>

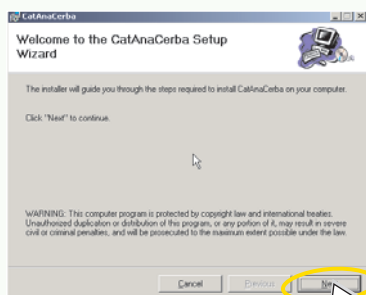
Section: **Catalogue** then click on: **Download CATANACERBA**

Login: **Cxxxx** (enter your correspondent no., consisting of 5 figures preceded by the letter C)

Password: **catanacerba**

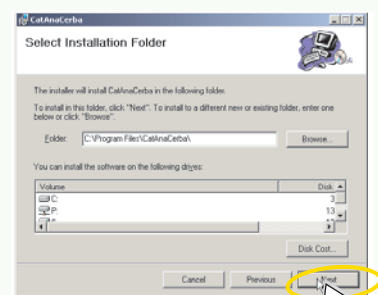
► **1** Installation

Click on the button: **NEXT**



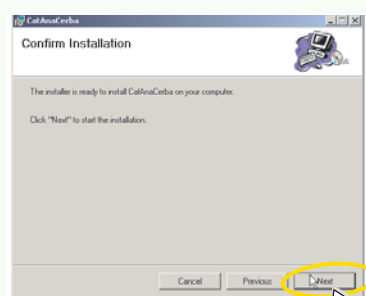
► **2** Validation of directory (by default)

Click on the button: **NEXT**



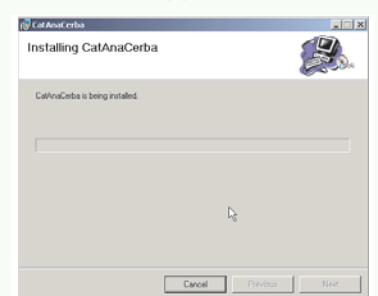
► **3** Installation confirmation

Click on the button: **NEXT**



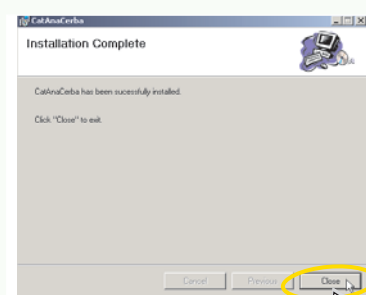
► **4** Automatic installation

Leave the copy of the files to run...



► **5** Full installation

Click on the button: **CLOSE**



► **6** Starting up of the application

Select: **CATANACERBA**

A shortcut has been created on the desktop

Double-click on the application, **CATANACERBA** is starting up...

